



## Auburn Tornado Rated EF-1

James Spann | 6:22 pm November 17, 2011 | Comments (0)

Here is the updated storm survey from yesterday's Alabama tornado outbreak...

PUBLIC INFORMATION STATEMENT  
NATIONAL WEATHER SERVICE BIRMINGHAM AL  
533 PM CST THU NOV 17 2011

### **...UPDATE FOR MACON AND LEE COUNTY TORNADO...**

THUNDERSTORMS DEVELOPED IN A VERY MOIST AND UNSTABLE ENVIRONMENT ACROSS CENTRAL ALABAMA WEDNESDAY NOVEMBER 16...AHEAD OF A STRONG COLD FRONT. THE ROTATING THUNDERSTORMS PRODUCED DAMAGE IN SEVERAL LOCATIONS ACROSS WEST CENTRAL AND SOUTH CENTRAL ALABAMA. IN ADDITION TO DAMAGE ACROSS PORTIONS OF ALABAMA...THIS STORM SYSTEM CAUSED DAMAGE FROM EASTERN TEXAS TO THE ATLANTIC COAST.

NATIONAL WEATHER SERVICE STORM SURVEY TEAMS CONDUCTED ADDITIONAL DAMAGE ASSESSMENTS IN SOUTH CENTRAL ALABAMA TODAY. ONE TEAM SURVEYED IN THE MONTGOMERY AREA...WHILE THE OTHER TEAM STARTED IN LEE COUNTY.

THE INITIAL DAMAGE ASSESSMENT FOR A TORNADO PATH IN MACON AND LEE COUNTIES IS DETAILED BELOW. DAMAGE ASSESSMENT FOR THE MONTGOMERY AREA IS ONGOING...AND INFORMATION PERTAINING TO THIS PATH WILL BE ISSUED AT A LATER TIME. IN ADDITION...AN AERIAL SURVEY FROM LOWNDES TO HARRIS COUNTY GEORGIA IS SCHEDULED FOR TOMORROW TO FURTHER SURVEY THE DAMAGE PATH.

WE WILL ISSUE ADDITIONAL PUBLIC INFORMATION STATEMENTS AS THE INFORMATION FROM ADDITIONAL SURVEYS BECOMES AVAILABLE.

...COMPLETED STORM SURVEYS...

A NATIONAL WEATHER SERVICE STORM SURVEY TEAM ASSESSED THE DAMAGE ACROSS SOUTHERN SUMTER AND WESTERN MARENGO COUNTIES AND FOUND TWO SEPARATE TORNADO DAMAGE PATHS.

...TORNADO 1.....SUMTER COUNTY TORNADO...

EVENT DATE: NOVEMBER 16, 2011

EVENT TYPE: EF-2 TORNADO

ESTIMATED PEAK WINDS (MPH): 120

INJURIES/FATALITIES: 1 INJURY

EVENT START LOCATION AND TIME: 32.3633/-88.0894 AT 707 AM

EVENT END LOCATION AND TIME: 32.3763/-88.0689 AT 709 AM

DAMAGE PATH LENGTH (IN MILES): 1.50

DAMAGE WIDTH (IN YARDS): 600 YARDS

AN EF-2 TORNADO BRIEFLY TOUCHED DOWN IN WHITFIELD AND MOVED NORTHEAST...AND LIFTED NORTH OF COUNTY ROAD 42. ALONG ITS SHORT PATH...APPROXIMATELY 150 SOFTWOOD TREES WERE SNAPPED...50 HARDWOOD TREES WERE UPROOTED...AND FIVE OUTBUILDINGS WERE DAMAGED. SIX HOMES AND ONE DOUBLE WIDE MOBILE HOME WERE DAMAGED. ONE HOME WAS DESTROYED ALONG COUNTY ROAD 42 WHERE ONE INJURY OCCURRED.

...TORNADO 2.....MARENGO COUNTY TORNADO...

EVENT DATE: NOVEMBER 16, 2011

EVENT TYPE: EF-0 TORNADO

ESTIMATED PEAK WINDS (MPH): 85

INJURIES/FATALITIES: NONE

EVENT START LOCATION AND TIME: 32.4813/-87.8567 AT 732 AM

EVENT END LOCATION AND TIME: 32.5032/-87.8174 AT 736 AM

DAMAGE PATH LENGTH (IN MILES): 2.57

DAMAGE WIDTH (IN YARDS): 250 YARDS

AN EF-0 TORNADO BRIEFLY TOUCHED DOWN IN DEMOPOLIS ALONG MARIA AVE AND MOVED NORTHEAST WHERE IT CROSSED JEFFERSON RD. IT LIFTED ALONG US HIGHWAY 80...EAST OF US HIGHWAY 43. APPROXIMATELY 20 HOMES IN THE EDGEWOOD SUBDIVISION SUSTAINED MINOR ROOF DAMAGE. SEVERAL BUSINESS SIGNS ALONG US HIGHWAY 80 WERE BLOWN DOWN. THE CENTRAL FARMERS COOP SUSTAINED SIGNIFICANT STRUCTURAL DAMAGE AS A PORTION OF ITS ROOF WAS REMOVED.

A NATIONAL WEATHER SERVICE STORM SURVEY TEAM ASSESSED THE DAMAGE ACROSS MACON AND LEE COUNTIES...FINDING DAMAGE ASSOCIATED WITH AN EF1 TORNADO. THIS TORNADO CONTINUED INTO HARRIS COUNTY GEORGIA WHERE IT PRODUCED EF2 DAMAGE.

**...TORNADO 3.....MACON AND LEE COUNTIES...**

EVENT DATE: NOVEMBER 16, 2011

EVENT TYPE: EF-1 TORNADO

ESTIMATED PEAK WINDS (MPH): 110

INJURIES/FATALITIES: 1 INJURY

EVENT START LOCATION AND TIME: 32.5369/-85.6566 AT 1152 AM

EVENT END LOCATION AND TIME: 32.6970/-85.1173 AT 1235 PM

DAMAGE PATH LENGTH (IN MILES): 33

DAMAGE WIDTH (IN YARDS): 700

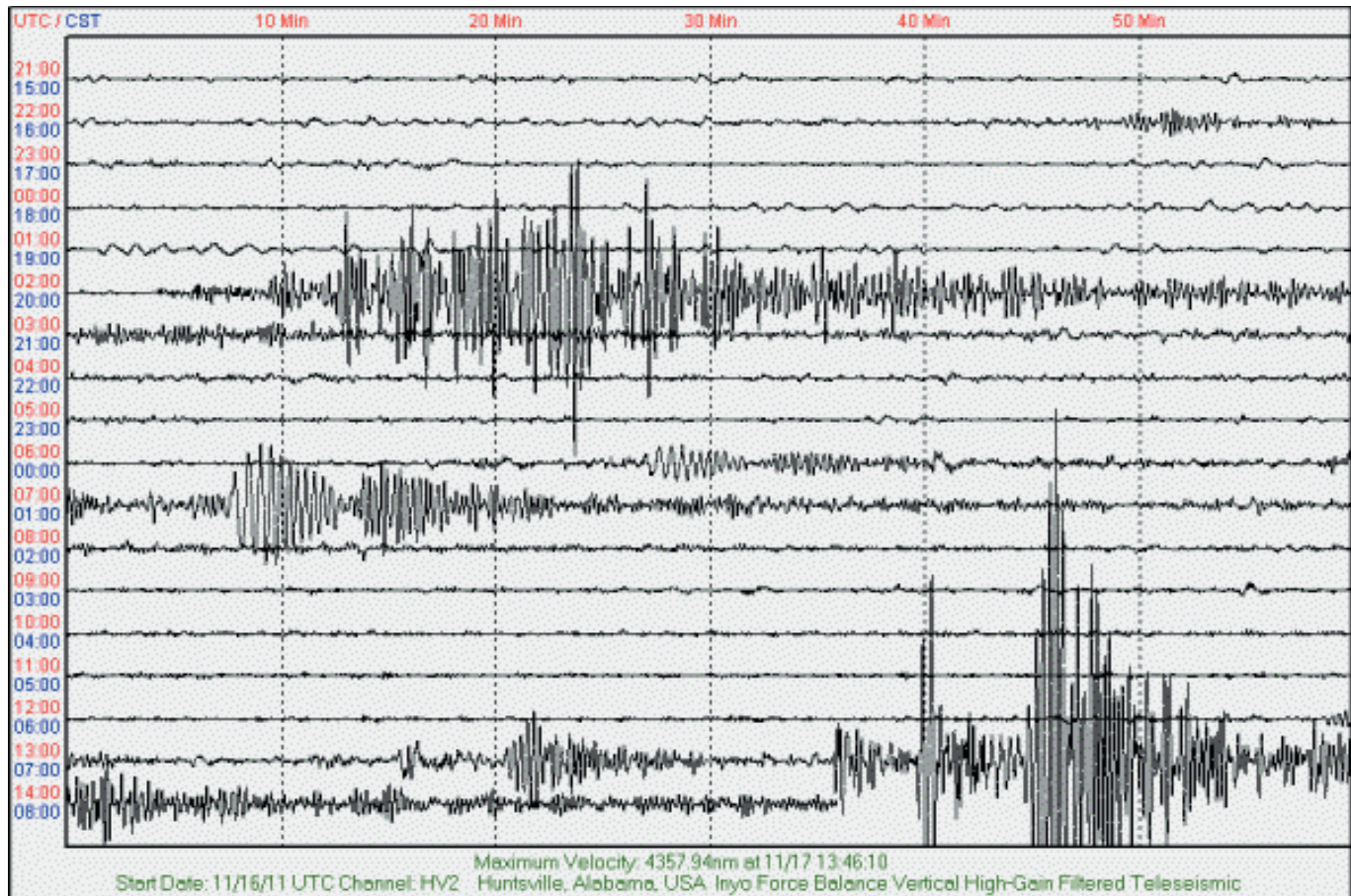
A TORNADO TOUCHED DOWN IN NORTHEAST MACON COUNTY NEAR NOTASULGA EAST OF COUNTY ROAD 81 AND CAUSED DAMAGE TO APPROXIMATELY A DOZEN MOBILE HOMES ALONG COUNTY ROAD 54. THE TORNADO MOVED TO THE NORTHEAST INTO LEE COUNTY AND CAUSED EXTENSIVE TREE DAMAGE WHICH RESULTED IN DAMAGE TO DOZENS OF HOUSES AND MOBILE HOMES ON THE WESTERN SIDE OF THE CITY OF AUBURN. SEVERAL RESIDENCES WERE DESTROYED. THE TORNADO CROSSED THE SOUTHERN EDGE OF AUBURN UNIVERSITY'S CAMPUS AND CAUSED DAMAGE TO HOMES AND THE BASEBALL FACILITIES AT AUBURN HIGH SCHOOL. THE TORNADO CROSSED INTERSTATE 85 AT US HIGHWAY 280 AND CONTINUED NORTHEASTWARD TOWARD LAKE HARDING. ALONG THE LAKE...WIDESPREAD TREE DAMAGE AND DAMAGE TO SEVERAL HOMES AND BOATHOUSES OCCURRED. THE TORNADO CONTINUED INTO HARRIS COUNTY GEORGIA FOR AN ADDITIONAL 26 MILES AND STRENGTHENED TO AN EF2.

...MEDIA CONTACT INFORMATION... FOR ALL MEDIA REQUESTS REGARDING WEDNESDAY'S STORMS... PLEASE CONTACT METEOROLOGIST-IN-CHARGE JIM STEFKOVICH AT 205-585-8635.

# Distant Quakes Register In Huntsville

James Spann | 6:05 pm November 17, 2011 | Comments (0)

Thanks to Steve Jones for this image... he writes...



“The overnight hours have seen a notable increase in the number of moderate earthquakes in the Eastern Pacific / Western Americas region (Ecuador, Northern East Pacific Rise, Guatemala), with five separate events (six, if you include a M5.1 event in Russia last evening) visible during the last 18-hour segment of Huntsville seismic activity captured this morning at <http://alabamaquake.com>.”

# Storm Survey Results

James Spann | 8:49 pm November 16, 2011 | Comments (3)

NOUS44 KBMX 170225 PNSBMX

NOUS97 KBMX 170225 PNSBMX ALZ040-171200-

PUBLIC INFORMATION STATEMENT...CORRECTED NATIONAL WEATHER SERVICE  
BIRMINGHAM AL 825 PM CDT WED NOV 16 2011

...SEVERAL SUPERCELLS AFFECTED CENTRAL ALABAMA WEDNESDAY...

THUNDERSTORMS DEVELOPED IN A VERY MOIST AND UNSTABLE ENVIRONMENT  
ACROSS CENTRAL ALABAMA WEDNESDAY NOVEMBER 16...AHEAD OF A STRONG  
COLD FRONT. THE ROTATING THUNDERSTORMS PRODUCED DAMAGE IN  
SEVERAL LOCATIONS ACROSS WEST CENTRAL AND SOUTH CENTRAL ALABAMA.

TOMORROW, THURSDAY, NOVEMBER 17, 2011, TWO NATIONAL WEATHER  
SERVICE STORM SURVEY TEAMS WILL CONDUCT ADDITIONAL DAMAGE  
ASSESSMENTS IN MONTGOMERY...ELMORE...TALLAPOOSA...MACON...AND  
LEE COUNTIES. WE WILL ISSUE ANOTHER PUBLIC INFORMATION STATEMENT  
THURSDAY AFTERNOON AFTER THE INFORMATION FROM THESE SURVEYS IS  
COLLECTED.

...PRELIMINARY LEE COUNTY INFORMATION...

LEE COUNTY EMERGENCY MANAGEMENT HAS DOCUMENTED THUNDERSTORM  
DAMAGE THAT STRETCHED APPROXIMATELY 27 MILES NEAR AUBURN. ONE  
PERSON WAS INJURED AS A RESULT OF THESE STORMS. NWS SURVEY TEAMS  
WILL BE ON-SITE TOMORROW MORNING TO DETERMINE THE EXTENT AND  
CAUSE OF THIS DAMAGE.

...SURVEYS COMPLETED...

A NATIONAL WEATHER SERVICE STORM SURVEY TEAM ASSESSED THE DAMAGE  
ACROSS SOUTHERN SUMTER AND WESTERN MARENGO COUNTIES AND FOUND  
TWO SEPARATE TORNADO DAMAGE PATHS.

...TORNADO 1.....SUMTER COUNTY TORNADO...

EVENT DATE: NOVEMBER 16, 2011

EVENT TYPE: EF-2 TORNADO

ESTIMATED PEAK WINDS (MPH): 120

INJURIES/FATALITIES: 1 INJURY

EVENT START LOCATION AND TIME: 32.3633/-88.0894 AT 707 AM

EVENT END LOCATION AND TIME: 32.3763/-88.0689 AT 709 AM

DAMAGE PATH LENGTH (IN MILES): 1.50

DAMAGE WIDTH (IN YARDS): 600 YARDS

AN EF-2 TORNADO BRIEFLY TOUCHED DOWN IN WHITFIELD AND MOVED NORTHEAST...AND LIFTED NORTH OF COUNTY ROAD 42. ALONG ITS SHORT PATH...APPROXIMATELY 150 SOFTWOOD TREES WERE SNAPPED...50 HARDWOOD TREES WERE UPROOTED...AND FIVE OUTBUILDINGS WERE DAMAGED. SIX HOMES AND ONE DOUBLE WIDE MOBILE HOME WERE DAMAGED. ONE HOME WAS DESTROYED ALONG COUNTY ROAD 42 WHERE ONE INJURY OCCURRED.

...TORNADO 2... ...MARENGO COUNTY TORNADO...

EVENT DATE: NOVEMBER 16, 2011

EVENT TYPE: EF-0 TORNADO

ESTIMATED PEAK WINDS (MPH): 85

INJURIES/FATALITIES: NONE

EVENT START LOCATION AND TIME: 32.4813/-87.8567 AT 732 AM

EVENT END LOCATION AND TIME: 32.5032/-87.8174 AT 736 AM

DAMAGE PATH LENGTH (IN MILES): 2.57

DAMAGE WIDTH (IN YARDS): 250 YARDS

AN EF-0 TORNADO BRIEFLY TOUCHED DOWN IN DEMOPOLIS ALONG MARIA AVE AND MOVED NORTHEAST WHERE IT CROSSED JEFFERSON RD. IT LIFTED ALONG US HIGHWAY 80...EAST OF US HIGHWAY 43. APPROXIMATELY 20 HOMES IN THE EDGEWOOD SUBDIVISION SUSTAINED MINOR ROOF DAMAGE. SEVERAL BUSINESS SIGNS ALONG US HIGHWAY 80 WERE BLOWN DOWN. THE CENTRAL FARMERS COOP SUSTAINED SIGNIFICANT STRUCTURAL DAMAGE AS A PORTION OF ITS ROOF WAS REMOVED.

# Major Auburn Damage

James Spann | 2:10 pm November 16, 2011 | Comments (3)

We understand there is little damage on the campus, but other parts of town are not as lucky.

Some reports from Twitter...

\*"major damage to wire rd on au. Trees and pwr lns down. Cars flipped. Damage to apts, trailers, and parts of vet school property"

\*"My niece called, they are also evacuating Gentilly for the gas leak in Ridgewood Village. Damage in Gentilly area too."



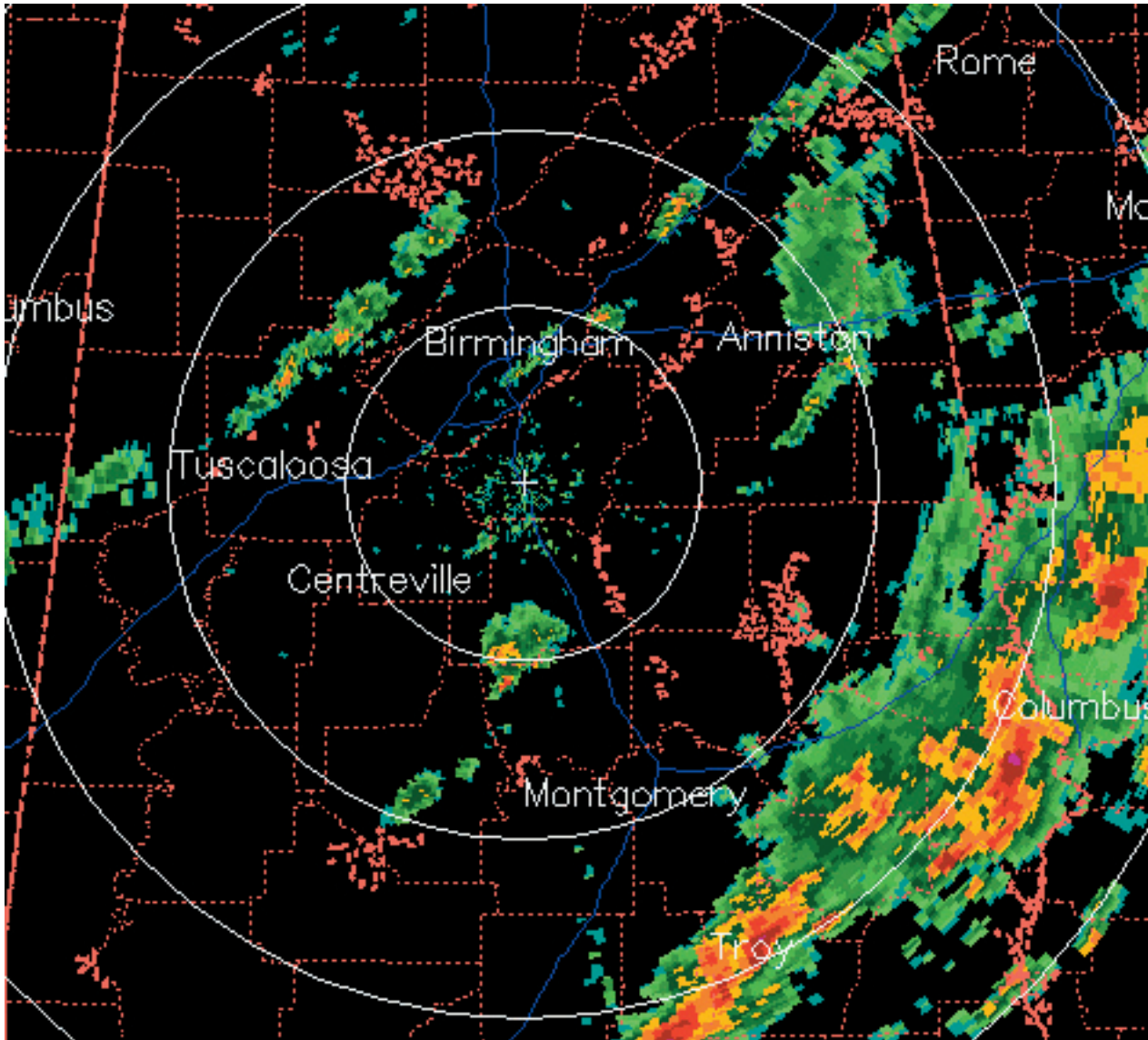
\*"Damage at Beef unit, Horse unit, vet school, Wire Rd/Shug Jordan intersection accident. Lots of damage . So far only minor injuries"

\*"Lots of damage in Ridgewood Village off Wire. Trees down on trailers. Gas leak. Police and firemen on scene"

The photo is from Ridgewood Village...

# Update – 109 pm

Dr. Tim Coleman | 1:09 pm November 16, 2011 | Comments (1)



The severe storms from this morning have now pushed into southeast Alabama, south of Montgomery and Auburn, well ahead of the cold front. There may still be a few severe storms/isolated tornadoes in southeast Alabama this afternoon, but as far as here in TCL/BHM/GAD/ANB/HSV, the wind shear has greatly decreased as surface winds are now from the SW, so the threat for tornadoes in north, central, and west Alabama is basically over.

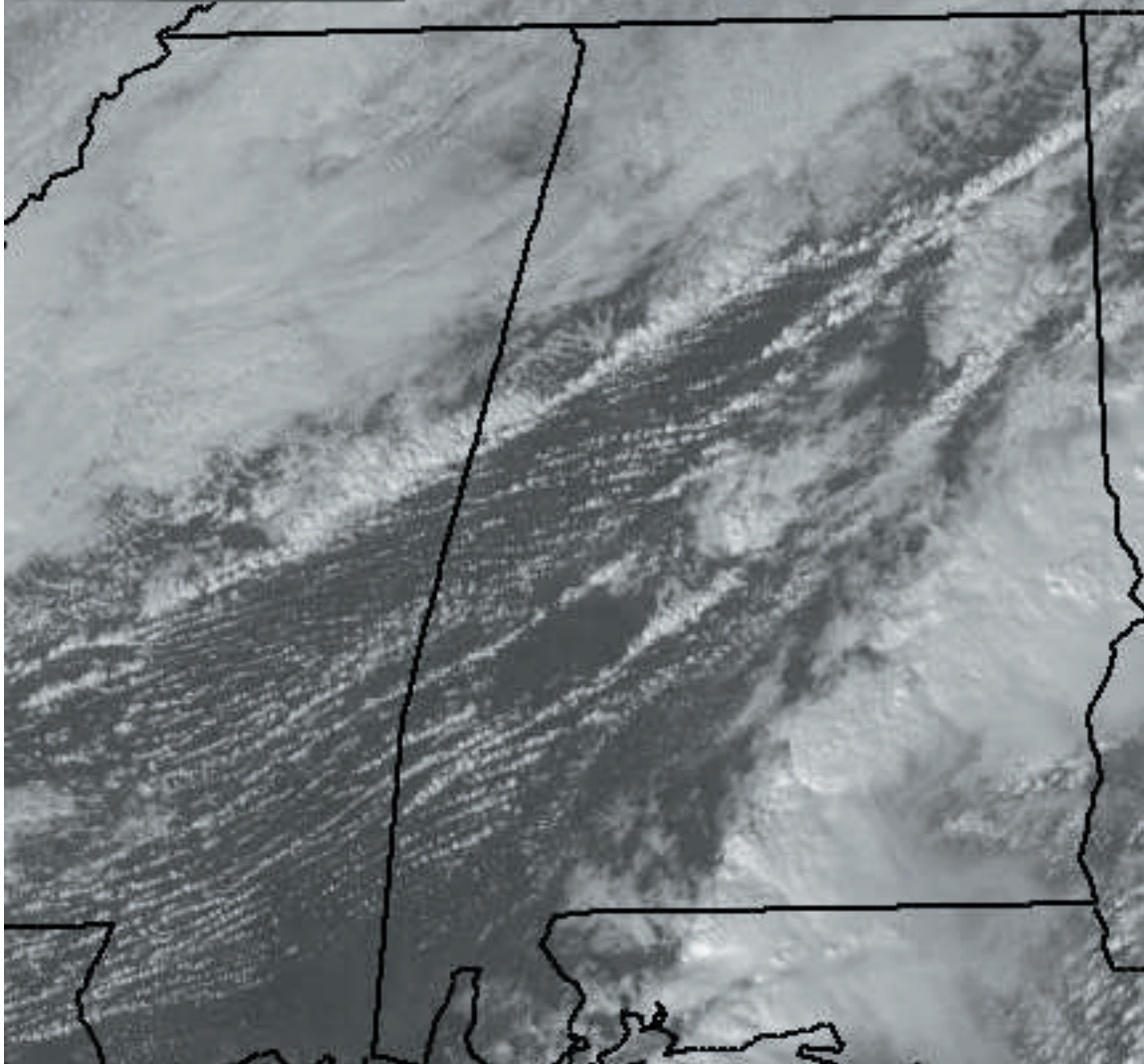
At least three tornadoes have been reported and caused damage that I am aware of...one in Demopolis, one on north Blvd in Montgomery, and one near Auburn University (no injuries reported at this time).



weather.msfc.nasa.gov

16 Nov 2011

18:45 UTC



However, the air ahead of the front (shown well by the narrow band of showers/storms from Colony to Northport) is still moist and a little unstable, and with some sunshine ahead of the front this afternoon (see satellite picture below), temperatures will warm into the upper 70s or lower 80s in some spots before the front arrives. This will allow some spots to get one or two more brief episode of heavy rain and storms, but these should not, in general, be severe, and tornado risk is extremely low. About 30 seconds of hamburger-sized raindrops just fell here in Trussville.

# Tornado Warning: Bullock, Macon, Russell

AlabamaWX.com | 12:26 pm November 16, 2011 | Comments (0)

WFUS54 KBMX 161825 TORBMX

ALC011-087-113-161915-/O.NEW.KBMX.TO.W.0168.111116T1825Z-111116T1915Z/

BULLETIN – EAS ACTIVATION REQUESTED TORNADO WARNING

NATIONAL WEATHER SERVICE BIRMINGHAM AL 1225 PM CST WED NOV 16 2011

THE NATIONAL WEATHER SERVICE IN BIRMINGHAM HAS ISSUED A

\* TORNADO WARNING FOR...

NORTHEASTERN BULLOCK COUNTY IN SOUTHEAST ALABAMA...

SOUTHEASTERN MACON COUNTY IN SOUTHEAST ALABAMA...

RUSSELL COUNTY IN SOUTHEAST ALABAMA...

\* UNTIL 115 PM CST

\* AT 1221 PM CST...THE NATIONAL WEATHER SERVICE INDICATED A SEVERE THUNDERSTORM CAPABLE OF PRODUCING A TORNADO. THIS DANGEROUS STORM WAS LOCATED 6 MILES EAST OF UNION SPRINGS...AND MOVING NORTHEAST AT 40 MPH.

\* LOCATIONS IMPACTED INCLUDE... HURTSBORO...PHENIX CITY...GUERRYTON...UCHEE...SEALE...RUSSELL COUNTY SPORTS COMPLEX...LADONIA...CREEK STAND...RUTHERFORD AND HATCHECHUBBE.

PRECAUTIONARY/PREPAREDNESS ACTIONS...

TAKE COVER NOW. FOR YOUR PROTECTION MOVE TO AN INTERIOR ROOM ON THE LOWEST FLOOR OF A STURDY BUILDING.

&&

TO REPORT SEVERE WEATHER... CALL 1-800-856-0758.

LAT...LON 3209 8563 3222 8569 3247 8515 3247 8507

3251 8506 3250 8499 3246 8499 3244 8496

3242 8496 3233 8500 3231 8494 3226 8489

TIME...MOT...LOC 1825Z 247DEG 35KT 3218 8557

\$\$

14